

# DIVIDEND GROWTH INVESTING

## Dividend Investing With All-Weather Potential

There are generally two types of dividend strategies:

- Dividend Growers** Those targeting stocks that consistently grow their dividends over time
- High Dividend Yielders** Those focusing on stocks that pay a high dividend yield

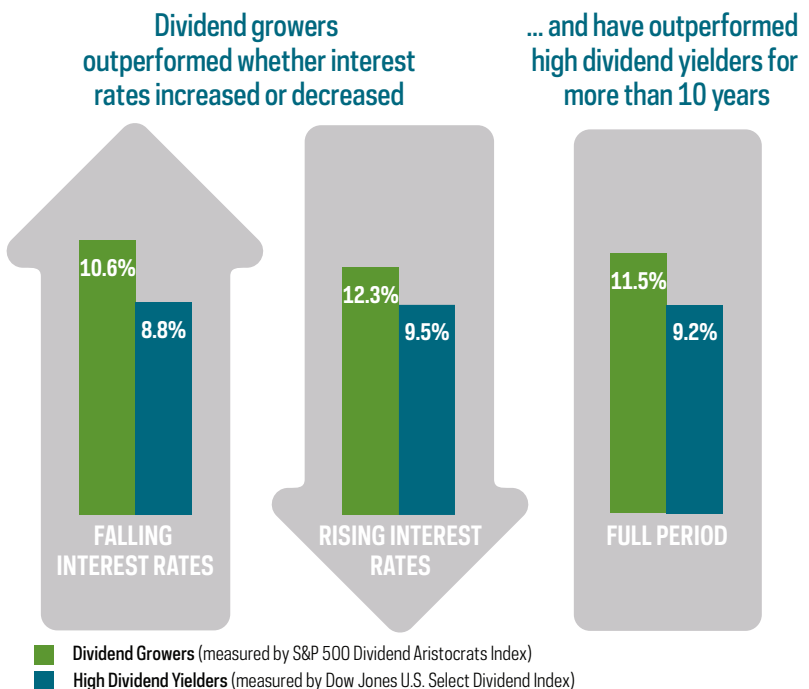
### Not all dividend strategies are created equal

These dividend strategies are constructed differently and may be used to accomplish different objectives. For example, investors seeking a greater-than-average income may choose high dividend yield strategies. But these strategies tend to have significant weightings in sectors that are highly sensitive to interest rate movements, thus introducing interest rate risk into the equity allocation.

On the other hand, strategies focused on stocks that have grown their dividends consistently (but don't always have the highest yields) may provide an all-weather dividend solution—one that has the potential to perform well regardless of the direction of rates.

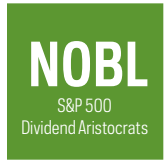
### Comparing dividend growers and high dividend yielders in different rate environments

Let's examine two popular dividend indexes as an example: S&P 500<sup>®</sup> Dividend Aristocrats<sup>®</sup> Index (dividend growers) vs. Dow Jones U.S. Select Dividend<sup>™</sup> Index (high dividend yielders).



Source: Bloomberg, 5/2/05-12/31/17. Results show average performance of dividend strategies based on monthly interest rate changes. S&P 500 Dividend Aristocrats measures the performance of S&P 500 companies that have increased dividends every year for the last 25 consecutive years. Dow Jones U.S. Select Dividend Index represents the United States' leading stocks by dividend yield; this index is shown here because it is tracked by the largest high dividend yield ETF by assets. **Past performance is not a guarantee of future results.** See reverse for fund performance. There is no guarantee dividends will be paid. Companies may reduce or eliminate dividends at any time, and those that do will be dropped from the indexes at reconstitution.

# THE TAKEAWAY



As investors consider dividend strategies, it's important to note the difference between high dividend yield strategies and dividend growth strategies. While the former may provide the higher income many investors crave, they tend to be sensitive to interest rate movements. The latter, on the other hand, offer all-weather potential, having performed well in a variety of interest rate environments.

ProShares offers the largest suite of ETFs focused on dividend growers, covering various U.S. market caps as well as international markets.



## Find out more

Visit [ProShares.com](http://ProShares.com) or consult your financial advisor.

### Fund performance and index history

Fund inception (October 9, 2013) through June 30, 2018

	1-Year	3-Year	Fund Inception
ProShares S&P 500 Dividend Aristocrats ETF NAV Total Return	10.24%	10.42%	11.97%
ProShares S&P 500 Dividend Aristocrats ETF Market Price Total Return	10.31%	10.46%	11.98%
S&P 500 Dividend Aristocrats Index	10.71%	10.90%	12.42%

Source: ProShares, Bloomberg

NOBL's total operating expenses are 0.35%. The performance quoted represents past performance and does not guarantee future results. Investment return and principal value of an investment will fluctuate so that an investor's shares, when sold or redeemed, may be worth more or less than the original cost. Shares are bought and sold at market price (not NAV) and are not individually redeemed from the fund. Market price returns are based upon the midpoint of the bid/ask spread at 4:00 p.m. ET (when NAV is normally determined for most funds) and do not represent the returns you would receive if you traded shares at other times. Brokerage commissions will reduce returns. Current performance may be lower or higher than the performance quoted. Standardized returns and performance data current to the most recent month end may be obtained by visiting [ProShares.com](http://ProShares.com).

ProShares is the leader in dividend growers ETFs by number of funds and assets under management. Source: Bloomberg, 12/31/17. **This information is not meant to be investment advice.** Index performance returns do not reflect any management fees, transaction costs or expenses. Indexes are unmanaged and one cannot invest in an index. **Investing involves risk, including the possible loss of principal.** This ProShares ETF is diversified and entails certain risks, including imperfect benchmark correlation and market price variance, that may decrease performance. Please see summary and full prospectuses for a more complete description of risks. **There is no guarantee any ProShares ETF will achieve its investment objective.**

**Carefully consider the investment objectives, risks, charges and expenses of ProShares before investing. This and other information can be found in their summary and full prospectuses. Read them carefully before investing. Obtain them from your financial advisor or broker-dealer representative or visit [ProShares.com](http://ProShares.com).**

The "S&P 500® Dividend Aristocrats® Index" is a product of S&P Dow Jones Indices LLC and its affiliates and has been licensed for use by ProShares. "S&P®" is a registered trademark of Standard & Poor's Financial Services LLC ("S&P") and "Dow Jones®" is a registered trademark of Dow Jones Trademark Holdings LLC ("Dow Jones") and have been licensed for use by S&P Dow Jones Indices LLC and its affiliates. ProShares have not been passed on by S&P Dow Jones Indices LLC and its affiliates as to their legality or suitability. ProShares based on the S&P 500 Dividend Aristocrats Index are not sponsored, endorsed, sold or promoted by these entities and their affiliates, and they make no representation regarding the advisability of investing in ProShares. **THESE ENTITIES AND THEIR AFFILIATES MAKE NO WARRANTIES AND BEAR NO LIABILITY WITH RESPECT TO PROSHARES.** ProShares are distributed by SEI Investments Distribution Co., which is not affiliated with the funds' advisor. © 2018 PSA BR-2017-6218